

- 1.0 Chief, DSSD
- 1.0 Manager of Special Districts
- 2.0 Principal Civil Engineer
- 1.0 Principal Land Surveyor
- 3.0 Senior Civil Engineer
- 2.0 Senior Land Surveyor
- 4.0 Associate Civil Engineer
- 3.0 Associate Land Surveyor
- 2.0 Assistant Civil Engineer
- 5.0 Assistant Land Surveyor
- 1.0 Administrative Services Officer 2
- 1.0 Supervisor Permits & Fees
- 5.0 Survey Party Chief
- 1.0 Supervising Engineering Technician
- 3.0 Principal Engineering Technician
- 4.0 Senior Engineering Technician
- 1.0 Engineering Technician I/II
- 1.0 Survey Technician II

41.0 Permanent Positions

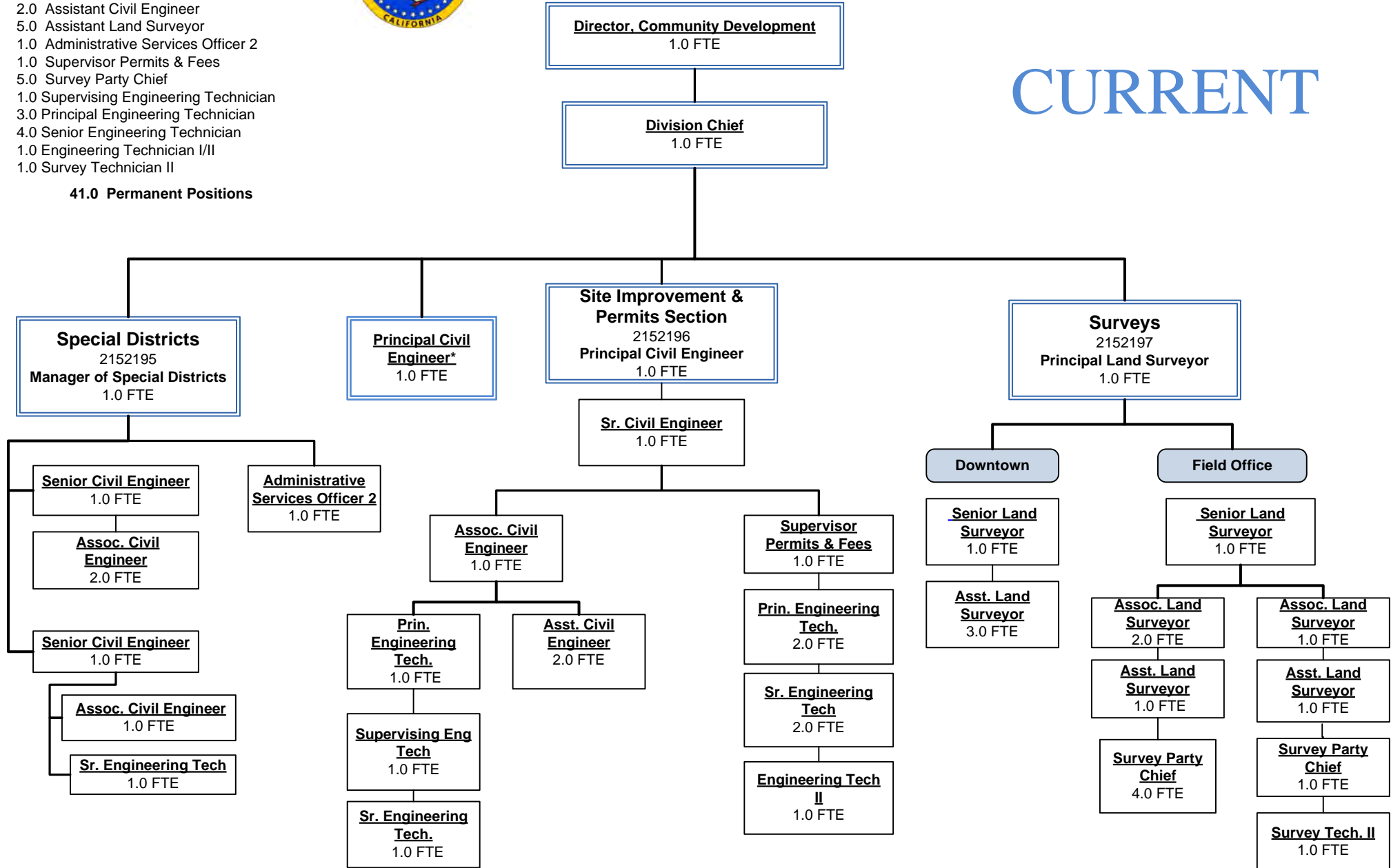


Department of Community Development

County Engineering Division

FY 2022-2023

CURRENT



The **County Engineering Division** assists property owners as well as the building and development community with subdividing property, development projects, understanding laws and codes related to development, and reviewing final subdivision and parcel maps. The division also reviews and approves civil improvement plans, provides surveying and mapping support for County projects, prepares and administers infrastructure financing plans, and calculates and collects development fees for infrastructure (road and transit, sewer and water connection, and drainage).